

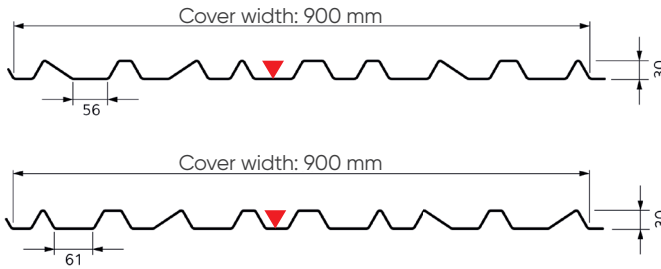
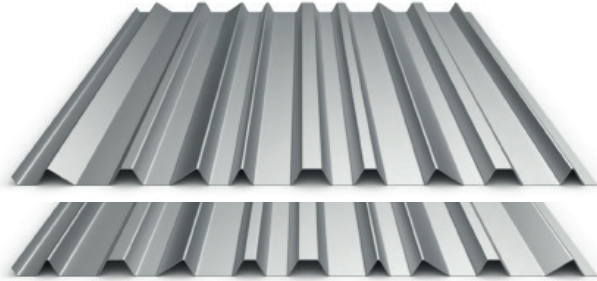
Eclectic® 30



ArcelorMittal

Profiled sheet for single and double skin cladding

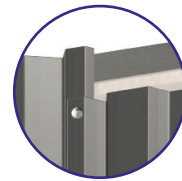
Haironville (FR)



- Shorter lengths up to 200 mm are available on request. Minimum length 1,800 mm /
- Maximum length 10,000 mm.
- Recommended maximum length for horizontal installation: 9,500 mm
- Minimum thickness for horizontal installation : 0.75 mm
- Horizontal installation could cause a build up of dirt etc as the corrugations won't naturally be rain washed

Surface mass

Thickness (mm)	0.63	0.75
Mass (kg/m ²)	6.51	7.75



Overlap

Table of maximum permissible loads in kN/m² as a function of the working spans

For horizontal single skin installations, the span is limited to 2 m.

		2 SUPPORTS		Span (m)	3 SUPPORTS		
		Thickness (mm)			Thickness (mm)		
		0.63	0.75		0.63	0.75	
Single & double skin	Pressure	2.00	2.00	≤ 1.40	2.00	2.00	Pressure
	Underpressure	2.00	2.00		2.00	2.00	Underpressure
	Pressure	1.68	2.00	1.60	2.00	2.00	Pressure
	Underpressure	1.59	1.89		1.71	2.00	Underpressure
	Pressure	1.22	1.45	1.80	2.00	2.00	Pressure
	Underpressure	1.21	1.44		1.39	1.65	Underpressure
	Pressure	0.92	1.10	2.00	1.81	2.00	Pressure
	Underpressure	0.92	1.10		1.14	1.36	Underpressure
Single skin vertical	Pressure	0.72	0.85	2.20	1.39	1.65	Pressure
	Underpressure	0.72	0.85		0.96	1.14	Underpressure
	Pressure	0.57	0.68	2.40	1.11	1.32	Pressure
	Underpressure	0.57	0.68		0.82	0.98	Underpressure
	Pressure		0.55	2.60	0.91	1.08	Pressure
	Underpressure		0.55		0.71	0.84	Underpressure
	Pressure			2.80	0.75	0.90	Pressure
	Underpressure				0.62	0.73	Underpressure
	Pressure			3.00	0.63	0.76	Pressure
	Underpressure				0.54	0.65	Underpressure
	Pressure			3.20		0.64	Pressure
	Underpressure					0.57	Underpressure

Span table according to French norms